

The purpose of this guide is to assist home owners and contractors with the process of installing new *mechanical equipment such as air conditioners, heat pumps, pool equipment and generators* in residential zones to help reduce the impacts of noise from this type of equipment on neighbouring properties.

**Locating the mechanical equipment;** *(Please refer to the illustration on page 2)*

In accordance with the City of Coquitlam Zoning Bylaw PART 5 GENERAL REGULATIONS Subsection 514(4): Exterior heating and cooling equipment, heat pumps, ancillary swimming pool heating and filtering equipment, emergency generators; *for one-family residential, two-family residential, triplex residential, quadruplex residential and street-oriented village home residential uses*; the subject equipment **must be located a minimum of 1.0 metre from the required interior side lot line setback for the zone the building is located in.** Venting terminations for central heating and cooling equipment must be located such that they do not vent into the area of a *lot* adjacent to an *interior side lot line*. Ancillary swimming pool heating and filtering equipment is restricted to a maximum *height* of 1.3 metres above grade.




**Other considerations;**

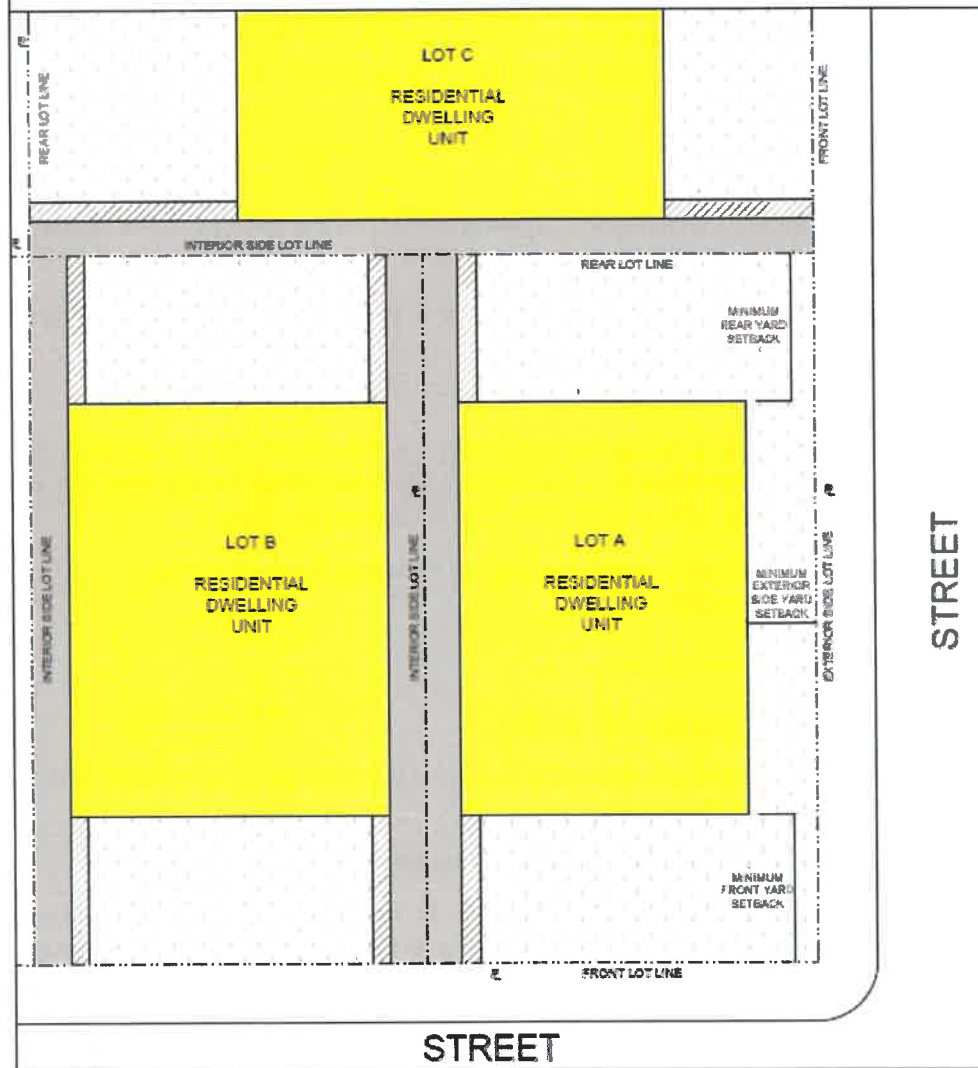
- The preferred location for the mechanical equipment is close to the building in the center rear yard or front yard of the dwelling unit that it serves.
- Avoid installing the mechanical equipment adjacent to solid surfaces that may reflect the sound towards the neighboring properties.
- Keep the mechanical equipment away from the drip line of roof or deck overhangs.
- Installing additional barriers or locating the equipment behind a fence, shed or landscaping may help to interrupt the noise propagation towards adjacent properties. Installing the equipment on isolation mounts or isolation pads can also help reduce noise from the mechanical equipment.
- Features to look for when selecting a heat pump or air conditioning equipment:
  - *units that have the lowest decibel rating,*
  - *soft start on and off,*
  - *variable speed compressors and fans,*
  - *insulated compressors,*
  - *low sound level mode when operating at night.*
- Have the unit installed by a certified technician and annual maintenance by a certified technician will maintain the efficiency of the equipment.

**Selecting a location for the exhaust vents of the mechanical equipment;**

Exhaust vents for central heating and cooling equipment must be located so that they exhaust towards the front yard, rear yard, exterior side yard or through the roof. Reference the manufacturer's recommendations or contact Technical Safety BC for the appliance venting requirements. Condensation from heat pumps and furnace exhaust vents should be directed away from walkways and other paths of travel where freezing temperatures may cause a slipping hazard. *(Note; direct vent fireplaces, exhausts form hot water tanks and instantaneous domestic water heaters and exhaust from heat recovery ventilation units are not impacted by this bylaw.)*

**BYLAW 4902, 2018**  
**SECTION 514(4) - SITING EXCEPTIONS:**  
**EXTERIOR MECHANICAL EQUIPMENT & VENT TERMINATION - PERMITTED**  
**LOCATIONS FOR ONE-FAMILY RESIDENTIAL, TWO-FAMILY RESIDENTIAL, TRIPLEX,**  
**QUADRUPLEX & STREET-ORIENTATED VILLAGE HOME RESIDENTIAL LOTS**

-  Minimum interior side lot line setback
-  Additional 1.0m setback from interior side lot line setback
-  Permitted areas on lot for mechanical equipment & vent termination



***This information is provided for convenience only and is not in substitution of applicable City Bylaws, Provincial or Federal laws and regulations. Always refer to official documents. The City is not responsible for errors found in copies or alterations of this document.***